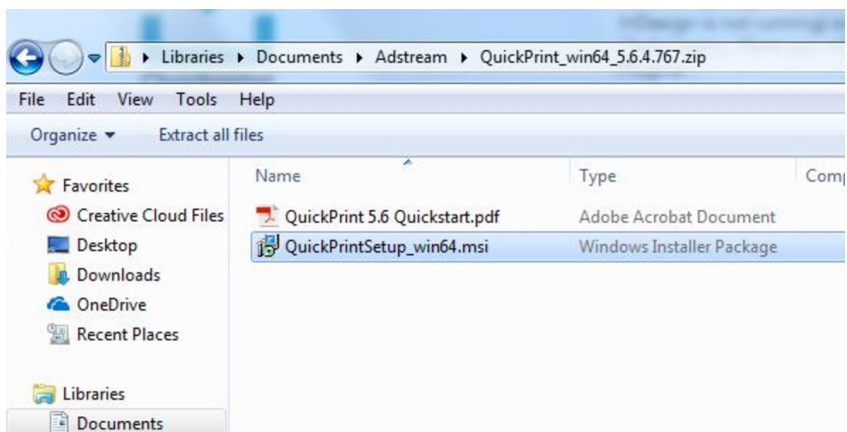


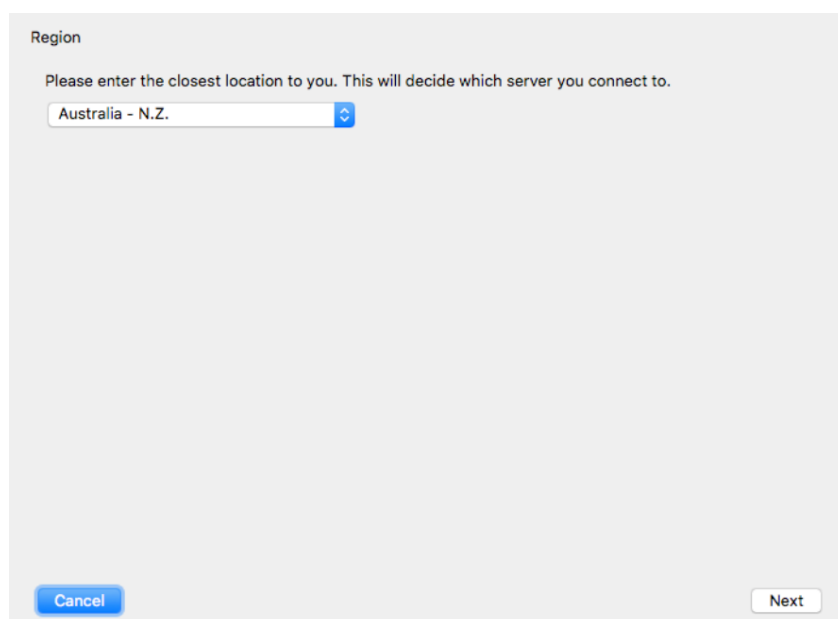


QuickPrint Desktop Installation Guide (Windows)

1. Download your QP installer from <https://helpcentre.adstream.com/hc/en-us/articles/4856032346004-Quickprint-Upgrade>
2. Create a folder called 'Adstream' in your Documents Folder.
3. Double click the QP...zip to show the ZIP files contents.
4. Double click QuickPrint.msi to begin the QP install.



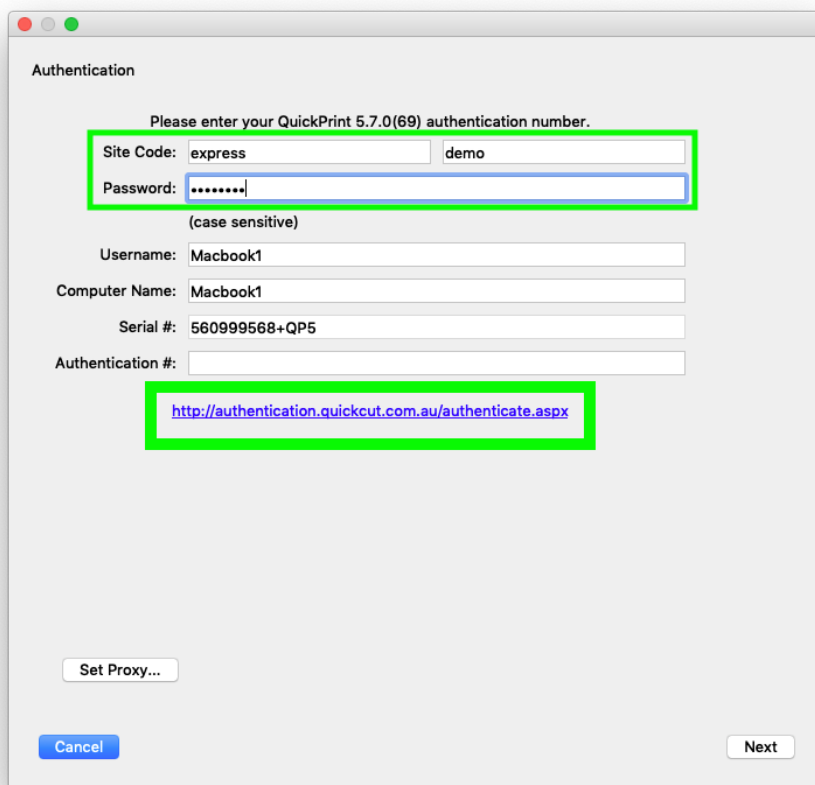
5. Under "Region", click on "Australia -N.Z." and click "Next".



6. You may get the below screen for authentication. Please follow the steps below to complete the details using the login credentials provided by Adstream.

Example - Site code: 1st column : express 2nd column :demo
Password: abc123

Once you have entered your username and password, click the blue link at the foot of the Authentication window.



Authentication

Please enter your QuickPrint 5.7.0(69) authentication number.

Site Code:

Password:

(case sensitive)

Username:

Computer Name:

Serial #:

Authentication #:

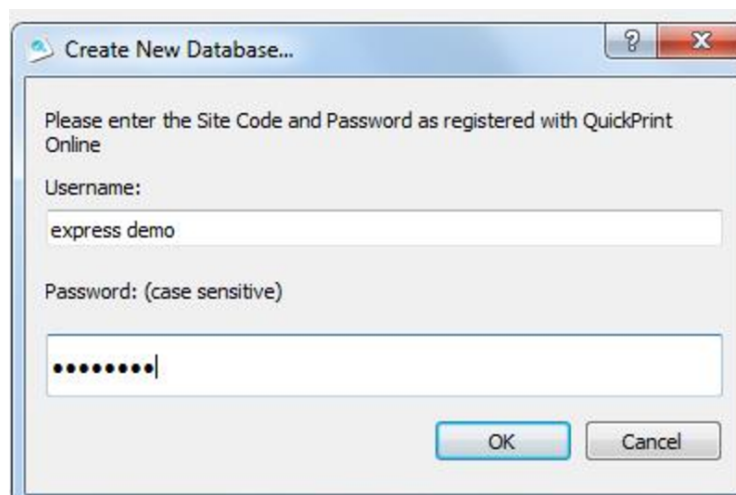
<http://authentication.quickcut.com.au/authenticate.aspx>

After clicking the blue link, the Quickprint authentication key code will auto-populate the Authentication Code field.

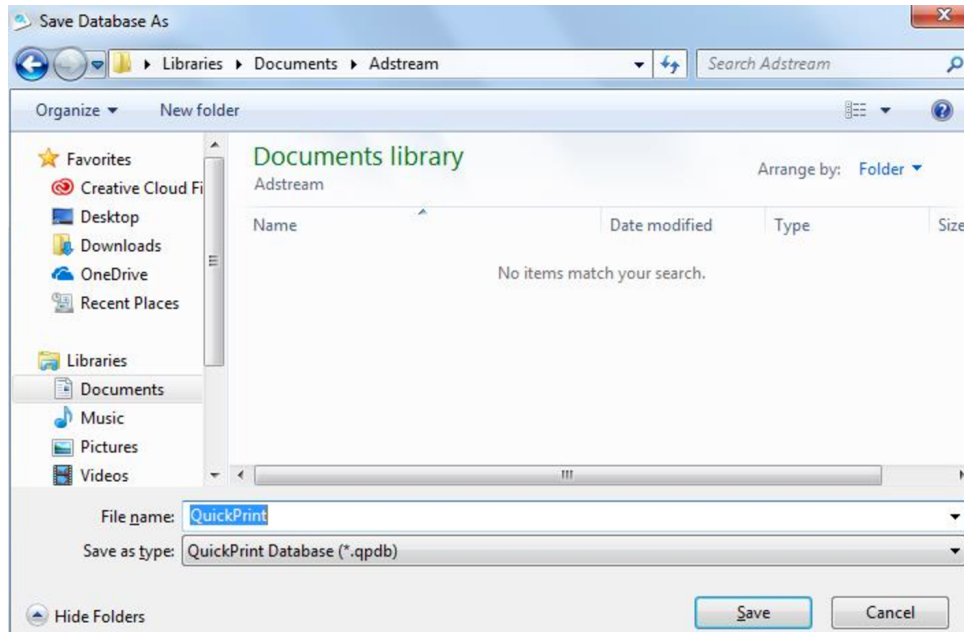
7. On the next window, click on **“Create New Database...”** to setup your account on QuickPrint. Then click **“Next”**.



8. Type in your username and password as provided by Adstream, then click **“OK”**. See the example below.



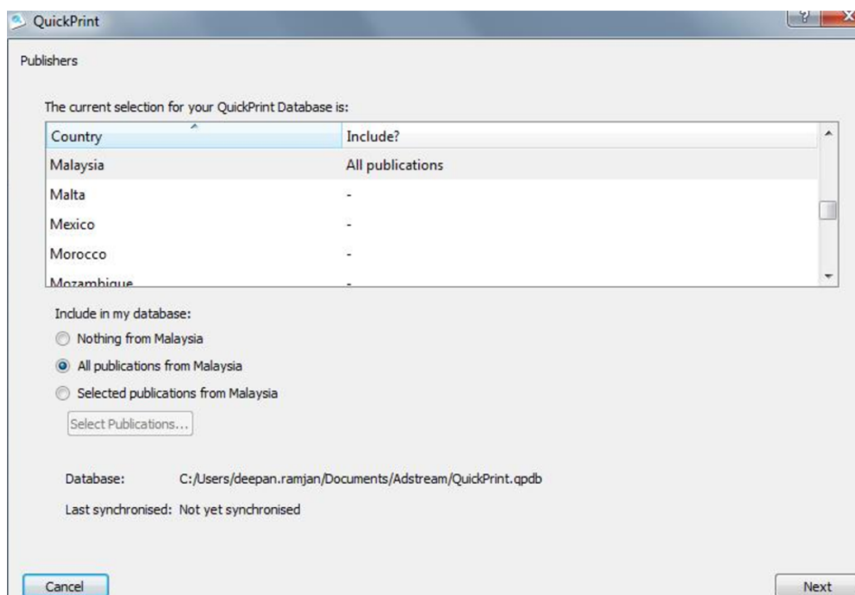
9. Locate the Adstream folder that you have created earlier in your Documents folder and save your QP database there.



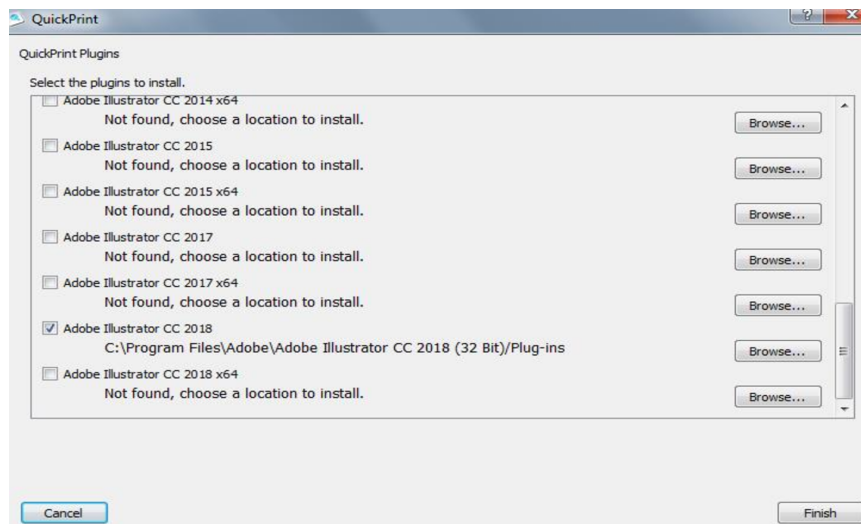
9.1 Select the desired countries you wish to send adverts to. Eg choose "Malaysia" if you wish to send your advert to a Malaysian publisher.

9.2 Select "All publications from country" for every publication or "Selected publications from country" if you want to send to a specific publisher only.

9.3 Then click "Next".



10. After the database is finished, QuickPrint will automatically detect if you have any Adobe applications installed. If it finds InDesign or Illustrator, QP will install the QP plugin for that Adobe application. Click **“Finish”** to confirm.



11. Go to the **QuickPrint Menu > Preferences**
- i) Assign a folder as an Accept Folder.
 - ii) Choose your preferred Unit of Measurement.
 - iii) Set the Local Check Setting to **1- DefaultlinkFix -v9**

